

Four Generation Pedigree



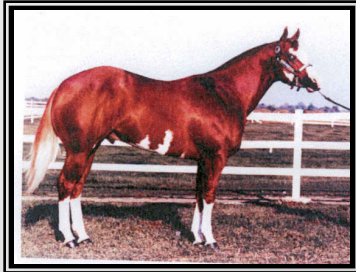
**AWESOME MISS TE**  
MARE - 00512260  
1999 - SORREL - OVERO



**Owner: RODEN, LAURIE L**  
PHOENIX, AZ

**Breeder: LOMBARDI, SHELLY A**  
WHITEFISH, MT

Sire



**MIGHTY AWESOME**  
00212878  
1992 - SORREL - OVERO

**BARLINK MACHO MAN**  
00068174  
1982 - SORREL - OVERO

**SON SWEET DREAMS**  
Q2446008  
1986 - SORREL -

**TUFFYS TWO SPADES**  
Q1337415  
- SORREL -

**PRIZE'S BAR LINK**  
00035489  
1977 - SORREL - OVERO

**SONNY SHOWCASE**  
Q1620474  
- SORREL -

**BETTYS SCOOTER BAR**  
Q2141921  
- SORREL -

**TARDY'S TUFFY 1**  
Q0892187  
- SORREL -

**JAY KAY SUE CASH**  
Q0989179  
- SORREL -

**OUR SIR PRIZE**  
00013950  
1969 - SORREL - OVERO

**MY TONTIME**  
Q0339880  
- RED ROAN -

**SONNY DEE BAR**  
Q0363938  
1965 - SORREL -

**HILDA SAN TWO**  
Q0355798  
- SORREL -

**MR BAR TAB**  
Q0826777  
1972 - SORREL -

**BETTYS SCOOT**  
Q0564748  
- BROWN -

OFFICIAL RECORDS OF THE AMERICAN PAINT HORSE ASSOCIATION

Dam



**MISS SONNY GO TE**  
00139253  
1987 - SORREL - OVERO

**SONNY GO TE**  
Q1591330  
1980 - SORREL -

**LADY LUCK PAYS**  
Q1696817  
- SORREL -

**TE N' TE**  
Q1135492  
1973 - BAY -

**LUCKY MACHINE**  
Q1172581  
1975 - SORREL -

**SONNY GO LUCKY**  
Q0843098  
1972 - SORREL -

**PAY'S GIDGET**  
Q0759496  
- SORREL -

**AZURE TE**  
J0620363  
- BAY -

**VILA**  
Q0137530  
1960 - BROWN -

**SONNY GO LUCKY**  
Q0843098  
1972 - SORREL -

**SCOTCH MACHINE**  
Q0845483  
1972 - SORREL -

**SONNY DEE BAR**  
Q0363938  
1965 - SORREL -

**HEAVENLY FIRE**  
Q0172929  
1961 - BAY -

**MAGNOLIA PAY**  
Q0321650  
1964 - SORREL -

**GAY BAR'S GIDGET**  
Q0330893  
- SORREL -